

BALLAD

THE PLEASURE IS MINE

H.HANCOCK

INTRO

Ab/C Bb/C A/C B/C Bb7(9#11) Amaj7(9#5) Db/Ab G7ALT.

A

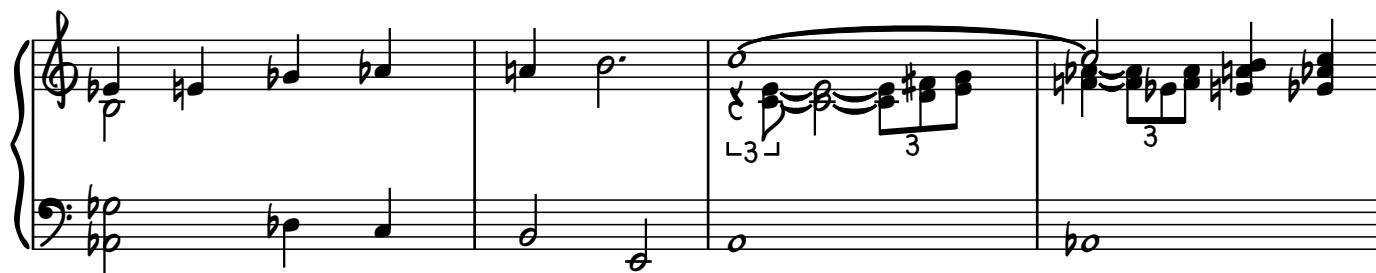
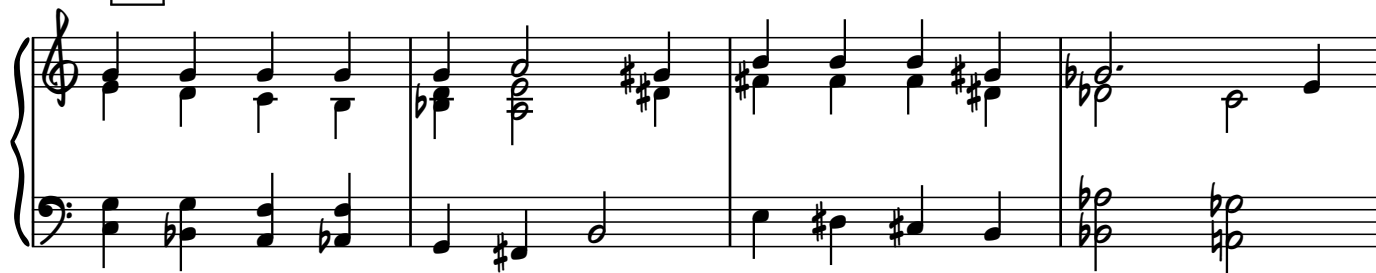
A musical score for the song 'The Rose Tree'. The score is written for piano (indicated by a large curly brace on the left) and features a treble and bass staff. The key signature is one flat (B-flat), and the time signature is common time (C). The melody is primarily in the treble staff, while the bass staff provides a simple harmonic accompaniment. The piece consists of 12 measures, with a repeat sign at the beginning and a double bar line at the end. The melody starts on a whole note G4, followed by a half note F#4, and then a series of eighth and sixteenth notes. The bass line starts on a whole note G3, followed by a half note F#3, and then a series of eighth and sixteenth notes. The piece ends with a final whole note G4 in the treble and a whole note G3 in the bass.

A handwritten musical score for the song 'The Rose Tree'. The score is written on two staves, Treble and Bass clef, with a key signature of one flat (B-flat) and a common time signature (C). The melody is in the Treble clef, and the accompaniment is in the Bass clef. The piece consists of four measures. The first measure features a triplet of eighth notes (B-flat, A-flat, G-flat) followed by a dotted quarter note (F-flat). The second measure has a half note (B-flat) and a quarter note (A-flat). The third measure contains a dotted half note (B-flat) and a quarter note (A-flat). The fourth measure has a dotted half note (B-flat) and a quarter note (A-flat). The bass line consists of a single note (B-flat) in the first measure, followed by a half note (B-flat) in the second measure, and a dotted half note (B-flat) in the third and fourth measures.

B

A musical score for the song 'The Rose Tree'. The score is written for a piano, with a treble and bass staff. The key signature is one flat (B-flat), and the time signature is 4/4. The melody is in the treble staff, and the accompaniment is in the bass staff. The melody consists of a series of eighth and quarter notes, with a final measure containing a half note. The accompaniment consists of a steady eighth-note pattern in the bass staff, with a final measure containing a half note. The score is divided into four measures by vertical bar lines.

A musical score for the song 'The Rose Tree'. The score is written for piano (p) and features a treble and bass staff. The key signature is one flat (B-flat), and the time signature is common time (C). The melody is in the treble staff, and the bass staff provides a simple harmonic accompaniment. The melody consists of a series of eighth and quarter notes, with a triplet of eighth notes in the final measure. The bass staff features a simple accompaniment of quarter and eighth notes. The score is marked with a piano (p) dynamic and includes a repeat sign at the end.



TO CODA



SOLO CHANGES

A



B



C

CΔ Am⁷ Abm⁷ Gm⁷ B⁷ EΔ Dbm⁷ Bb^ø AmΔ
 Abm⁷ Dbm⁷ Bm⁷ E⁷(b⁹) Am⁷ Ab⁷(#11)
 CΔ/G Eb^ø7/G Dm¹¹/G G⁷(b⁹) C% Bbm⁷ Eb⁷ AbΔ Db⁷

AFTER SOLO D.S. AL CODA

CODA

Ab/C Bb/C A/C B/C Bb⁷(#11) Amaj⁷(#5) Db/Ab

RALL

G⁷(b13) GbΔ Fm⁷ Bbm⁷ Ebm⁷ Ab⁷(#9#5) DbΔ